

DRAWING NUMBERING KEY

SHOP DRAWING

MC03 - A - 0000

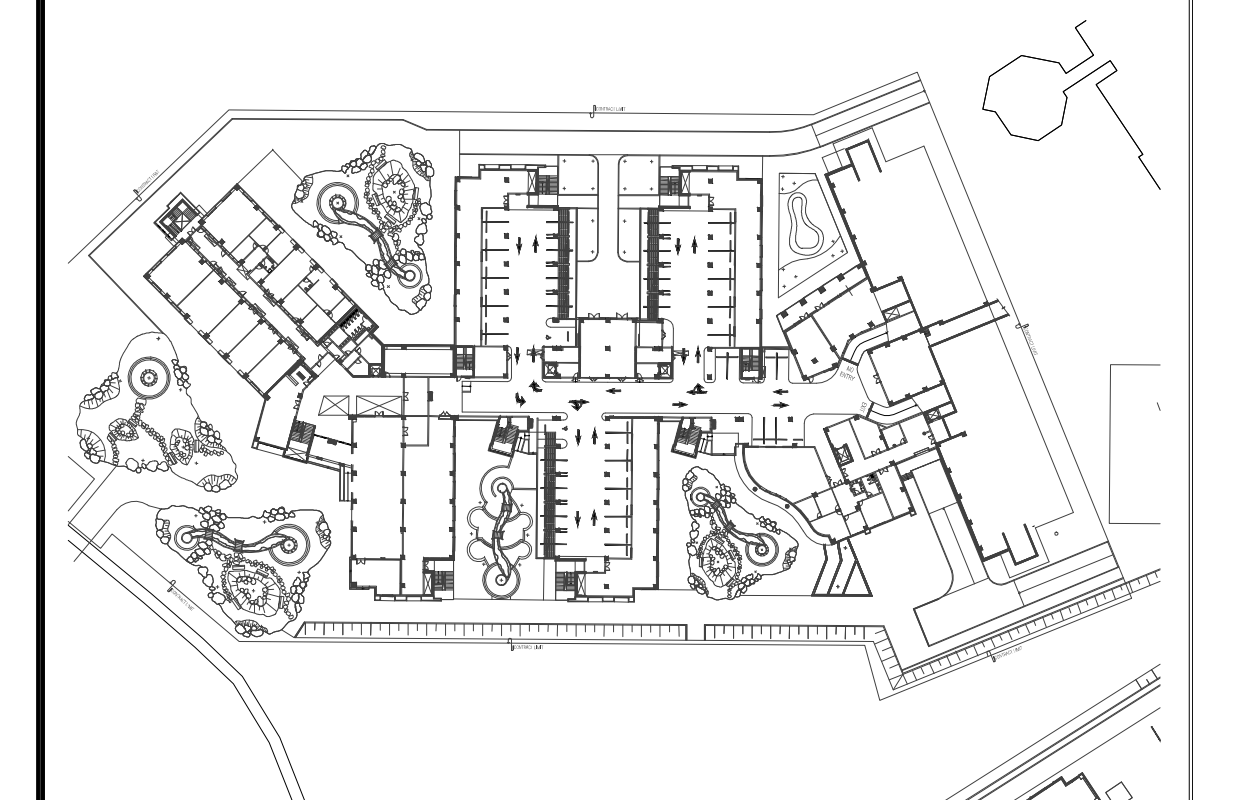
BLDG. REF. LAYOUT NUMBER
DESCIPLINE

NOTES:-

- 1- FOR LEGEND, ABBREVIATION AND DETAILS INSTALLATION REFER TO DWG (GP001-GP003).
- 2- EXACT ROUTE AND LOCATION OF EACH PIPELINE SHALL BE DETERMINED INCOORDINATION WITH OTHER TRADES PRIOR TO INSTALLATION.
- 3- BOTTOM LEVEL OF THE PIPE MEASURED FROM TOP ELEVATION (+00.00).
- 4- FOR ALL SITE WORKS DETAILS, MATERIAL AND EQUIPMENT MUST BE AS SUPPLIER APPROVED AND DETAILED BOQ
- 5- ALL SHOP DRAWING WORKS IS ACCORDING TO AVILABLE AND APPROVED DESIGN AND ANY MISSING INFORMATION REFER TO APPROVED DESIGN
- 6- ALL PIPES INSTALLATION STANDARD DETAILS MUST BE APPLIED AND FOLLOWED DURING INSTALLATION WORKS ACCORDING TO APPROVED MANUFACTURER OR SUPPLIER
- 7- ALL LOCATION E&N MUST BE AS PER APPROVED COORDINATE
- 8- THE CONTRACTOR SHOULD CONNECT ALL PIPING LAYOUT ACCORDING TO APPROVED DESIGNED SERVICE TUNNEL DETAILS
- 9- ALL SITE WORKS ROUTING, LEVELS...ETC IS ACCORDING TO APPROVED DESIGN.
10. FOR SITE SETTING OUT AND GRADING LEVEL AT PARKING LEVEL REFER TO DWG. MC03-XC-01.
11. UNLESS OTHERWISE INDICATED ALL DIMENSIONS, COORDINATES AND ELEVATIONS ARE IN METERS.
12. NORTHING AND EASTING COORDINATES ARE BASED ON MAGNETIC NORTH.
13. FOR POINT COORDINATES REFER TO DWG (XC-PNT).
14. FOR EXTERNAL FIRE PROTECTION REFER TO DWG MCD6-MECH-R033 (REV 0).

R1: 24/11/2012	FOR APPROVAL				
R0: 24/2/2012	FOR APPROVAL				
NO.	DATE	CAD BY	CHKD.	REVISIONS	STATUS DATE

KEY PLAN



BLDG REF. MC03

CONSULTANTS :



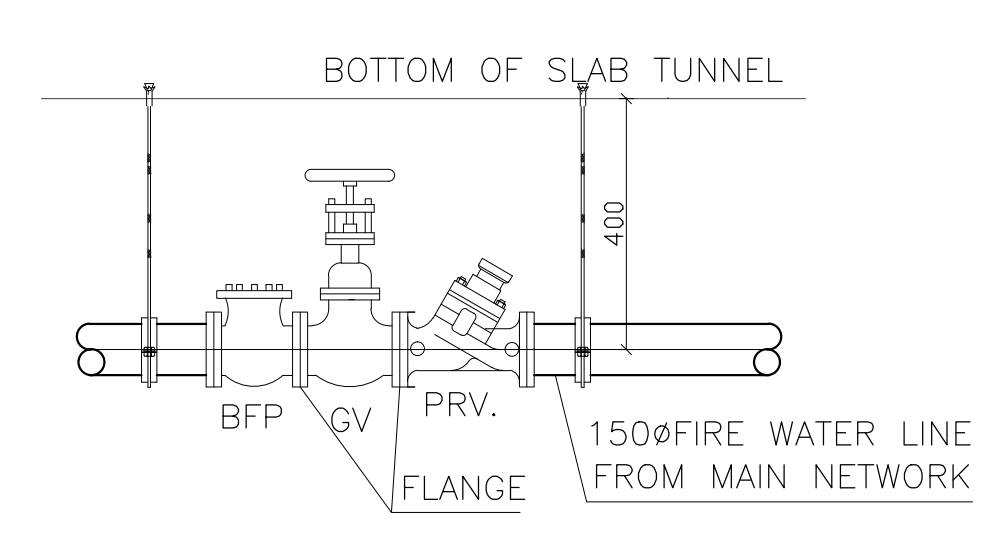
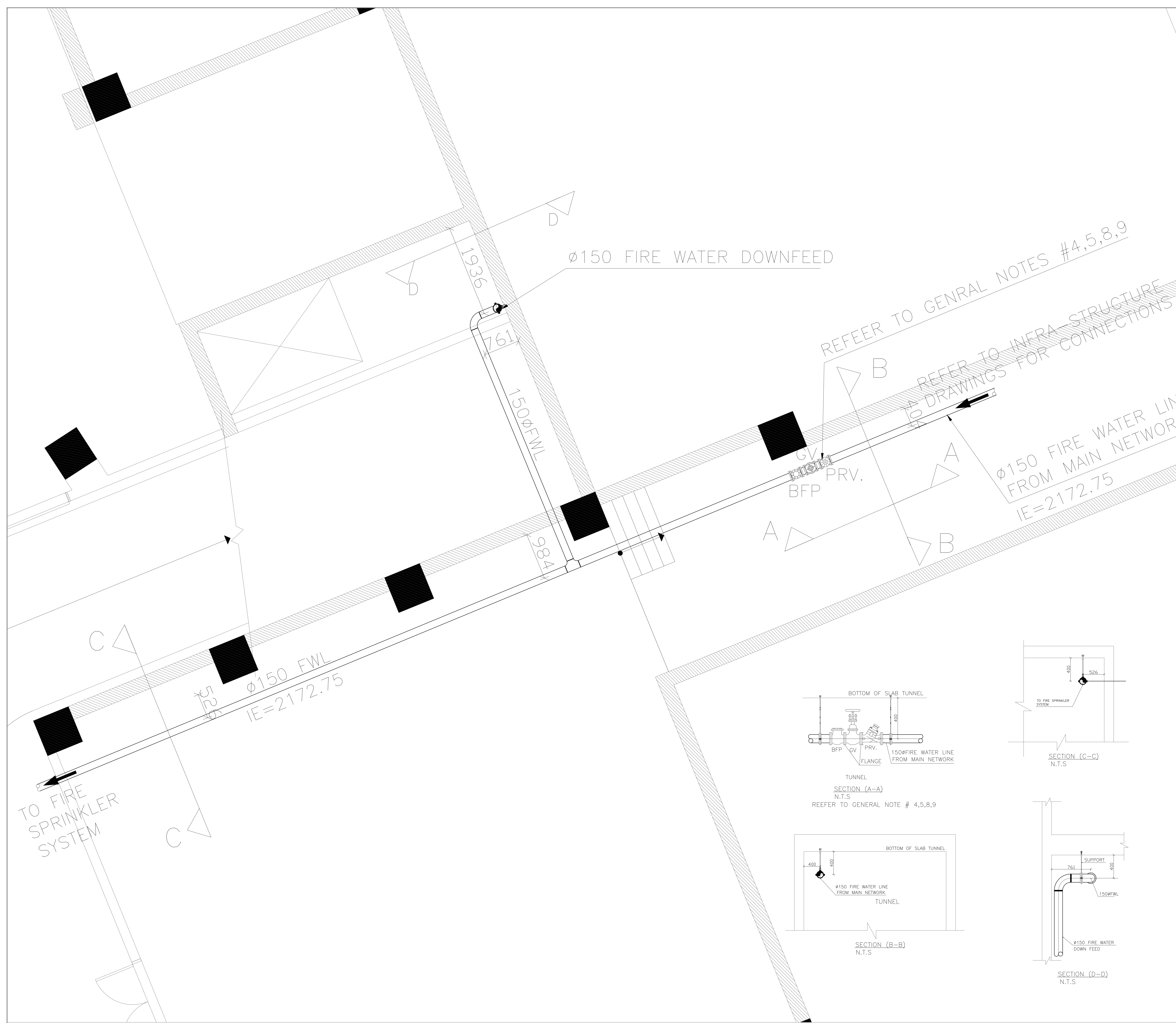
SHOP DRAWING

DESIGN REF. NO.: XP-02
SD REF. NO.: MC03-XP-P13

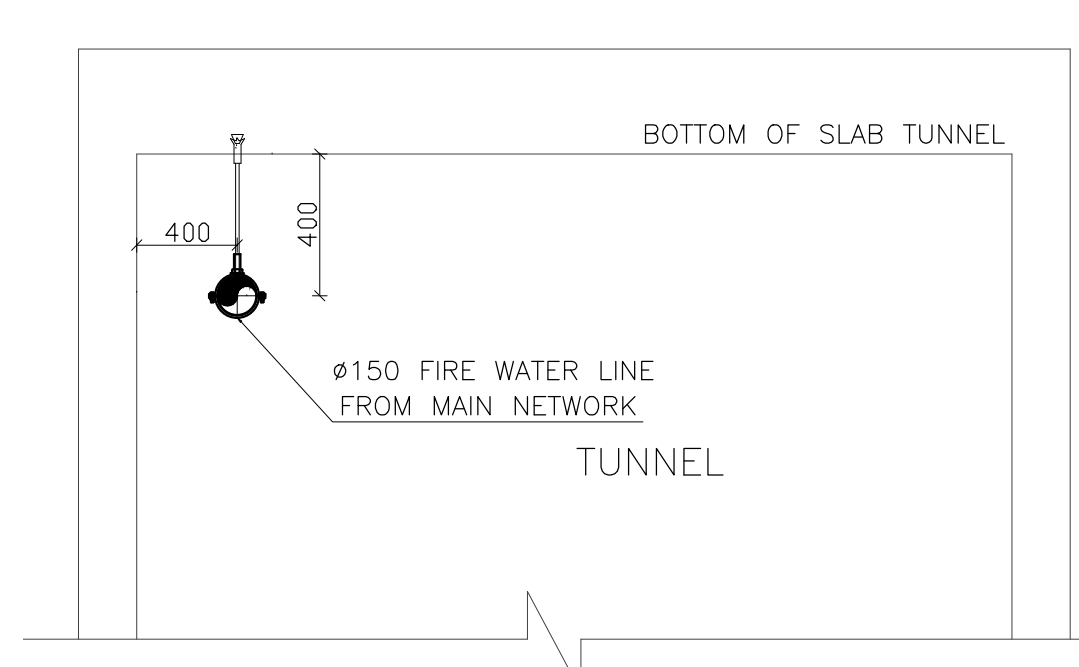
DRAWING TITLE
**EXTERNAL WORK DRAWINGS
PARKING LEVEL FIRE FIGHTING
PART 5**

COORDINATION	DATE: 24/11/2012
ARCH	SCALE
CIVIL/STRUCT.	1:25
ELECT.	
MECH.	
ENGG. MGR.	

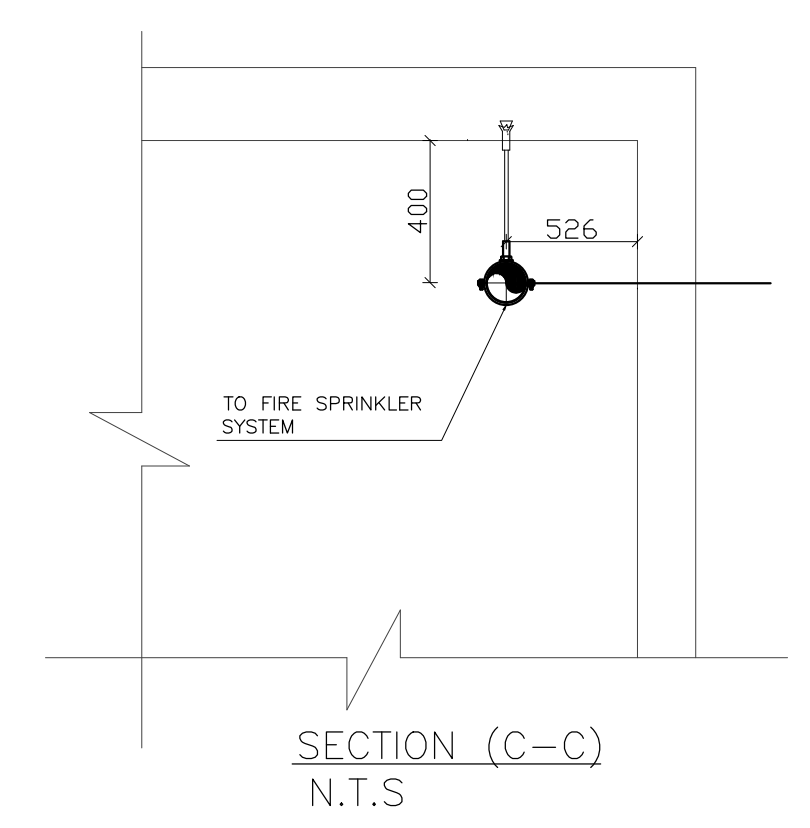
TRANSMITTAL NO. MC03-	DWG. NO. MC03-XP-P13.05	REV. NO. 1
--------------------------	----------------------------	---------------



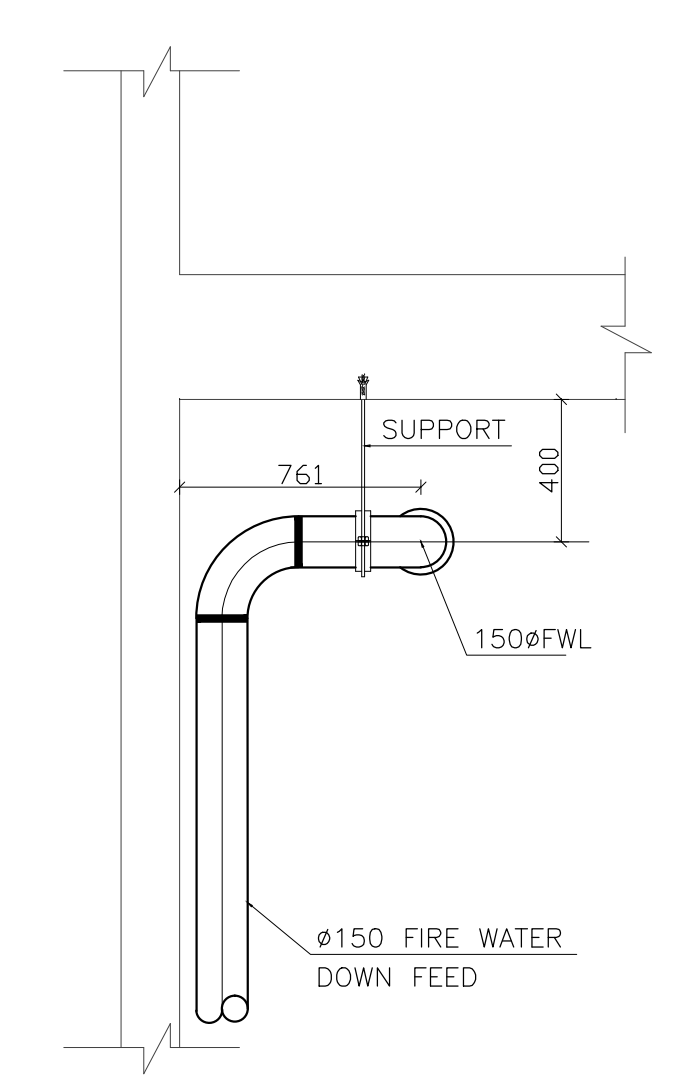
TUNNEL
SECTION (A-A)
N.T.S.
REFER TO GENERAL NOTE # 4,5,8,9



TUNNEL
SECTION (B-B)
N.T.S.



SECTION (C-C)
N.T.S.



SECTION (D-D)
N.T.S.