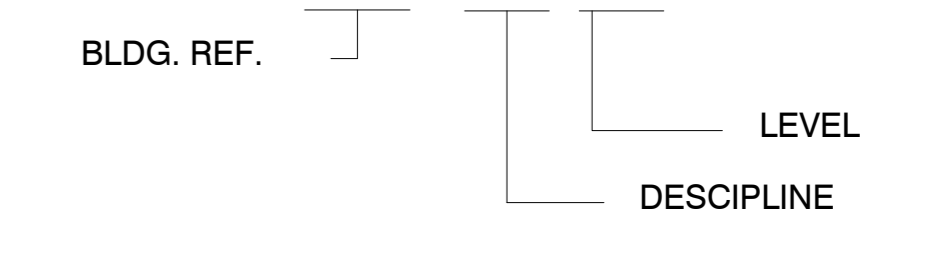


DRAWING NUMBERING KEY

SHOP DRAWING

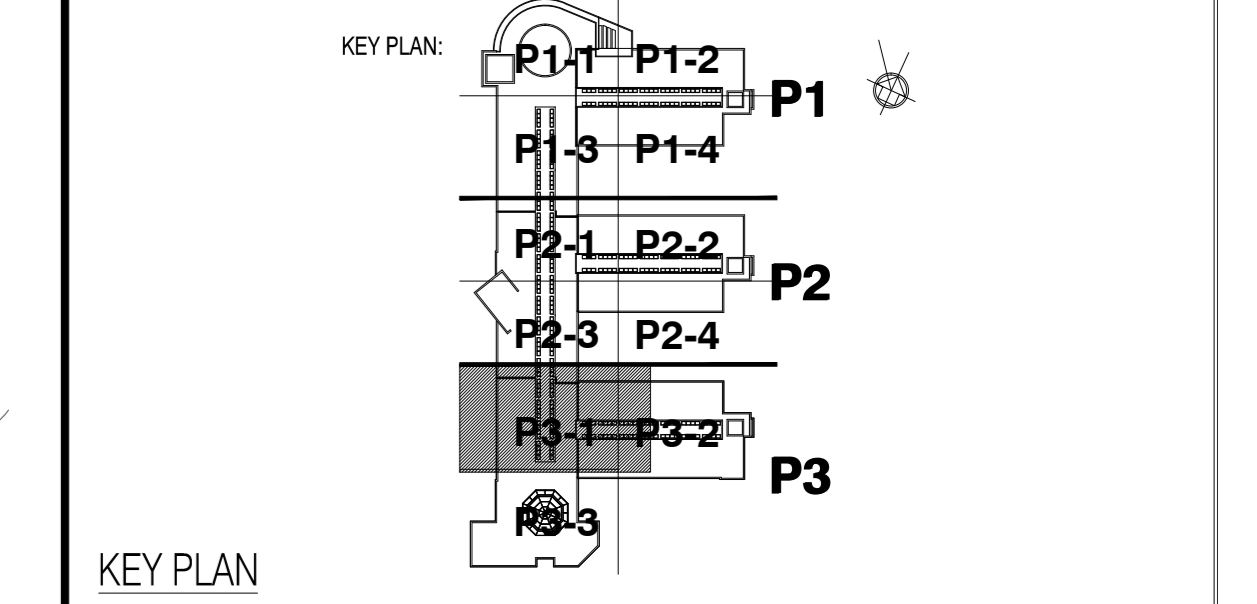
MC09B - P - 00



NOTES

- 1- ALL TOILET MODEL TYPES MUST BE AS THE APPROVED MODEL MATERIAL.
- 2- FOR LEGEND ABBREVIATION , DETAILS & GENERAL NOTES REFER TO DWG (GP001-GP005).
- 3- FOR ALL PLUMBING DETAILS FIXTURE AND EQUIPMENT MUST BE AS SUPPLIER APPROVED DETAILS AND B.O.Q.
- 4- REFER TO AREA PLANS & PIPING ISOMETRIC FOR DETAILED PIPING LAYOUT OF TOILETS AND OTHER WET SERVICE AREAS
- 5- PROVIDE SEPARATE ARCH GENERAL NOTES. HEIGHTS AND DETAIL PLAN FOR ARCH ACCORDING TO CONSULTANT APPROVED MATERIAL SUBMITTAL FOR TOILET FIXTURE & ACCESSORIES FOR THE ALL BUILDING
- 6- COORDINATE ALL PIPING ROUTING AT THE ALL BUILDING WITH COORDINATION APPROVAL
- 7- FOR ALL SECTION AND DETAILS REFER TO DWG NO PWS 307 TO 310

NO.	DATE	CAD BY	CHKD.	REVISIONS	STATUS	DATE
R2	16/11/2012	S.R.	R.A.	FOR APPROVAL		
R1	3/11/2012	S.R.	R.A.	FOR APPROVAL	3	3/11/2012
R0	22/10/2011	A.S.H.	A.S.H.	FOR APPROVAL	3	3/11/2011



KEY PLAN

BLDG REF. MC05

CONSULTANTS :

CONTRACTOR

SHOP DRAWING

DESIGN REF. NO.: P109-112
SD REF. NO.: MC09B-P-WS-109-112

DRAWING TITLE
GROUND FLOOR WATER SUPPLY PLAN
PART 3-1

COORDINATION	DATE
ARCH CIVIL/STRUCT. ELECT. MECH ENGR. MGR.	16.1.2012

TRANSMITTAL NO.	DWG. NO.	REV. NO.
MC09B-PLM-302-R2	MC09B-P-WS-112.3.1	2/0

B13
MC09B

B12
MC09B

B10
MC09B

B9
MC09B

B8
MC09B

B7
MC09B

A3
MC09B

A4
MC09B

A5
MC09B

A6
MC09B

A7
MC09B

A8
MC09B

A9
MC09B

A10
MC09B

A11
MC09B

PART (3-1)
MC09B-A-172
MC09B-A-173
PART (3-2)

